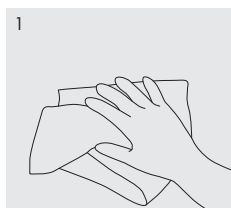


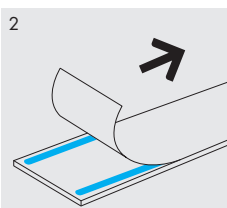
5in1

MONTAŻ UNIWERSALNY

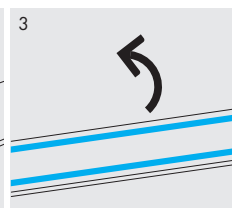
INSTRUKCJA



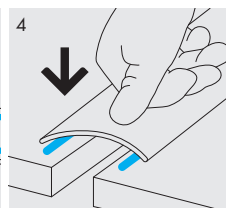
1
Przygotuj odpowiednio podłoże, które musi być odpylone, suche i odfuszczone.



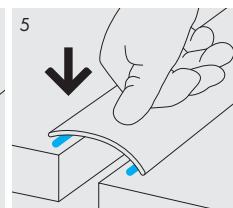
2
Zdejmij papier zabezpieczający klej.



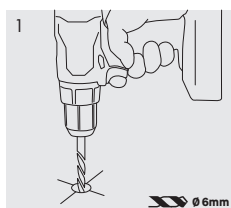
3
Odwróć profil i przyklej do podłoża.



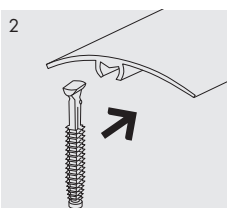
4
Przyklej profil do podłoża na tym samym poziomie.



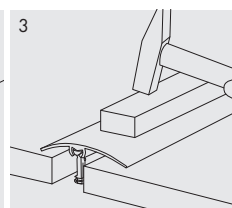
5
Przyklej profil do podłoża na różnych poziomach.



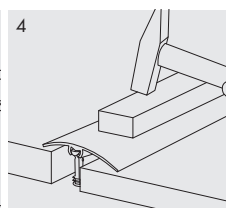
1
Wywierć otwór w podłożu.



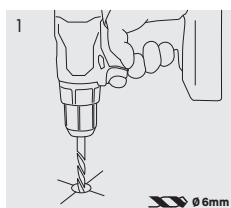
2
Wsuń kołek do prowadnicy w profilu.



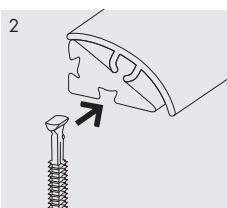
3
Wbij profil z kołkiem z użyciem drewnianego klocka.



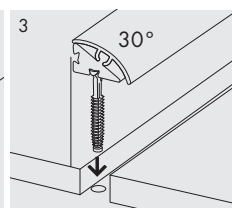
4
Wbij profil z kołkiem z użyciem drewnianego klocka.



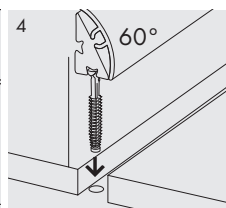
1
Wywierć otwór w podłożu.



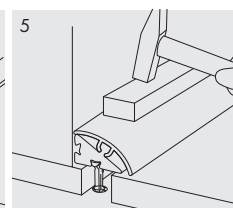
2
Wsuń element mocujący wraz z kołkiem do profilu.



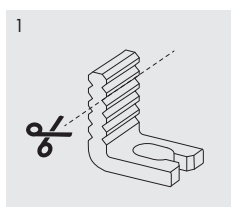
3
Element mocujący pozwala na montaż listwy pod kątem 30°.



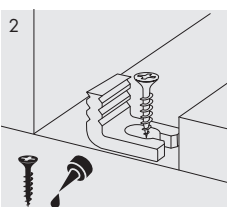
4
Element mocujący pozwala na montaż listwy pod kątem 60°.



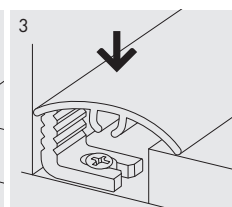
5
Wbij profil z kołkiem z użyciem drewnianego klocka.



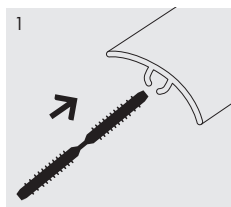
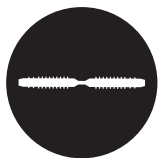
1
Przytnij element podtrzymujący do wymaganej wysokości.



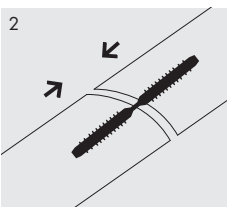
2
Przycięty element przykręć wkłębem lub przyklej do podłoża.



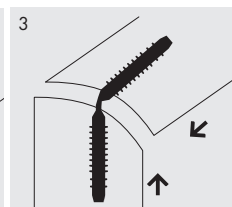
3
Zamocowany element podtrzymuje profil.



1
Wsuń łącznik w kanał w profilu.



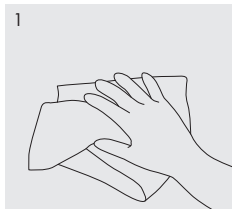
2
Łącznik pozwala łączyć profile.



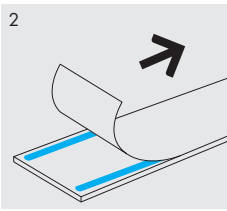
3
Połączenie pod dowolnym kątem.

5in1

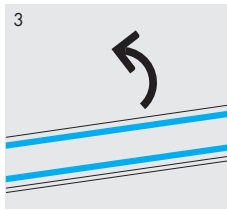
UNIVERSAL ASSEMBLY MANUAL



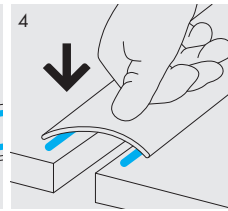
1 Prepare the floor properly, it must be dust-free, dry and cleaned.



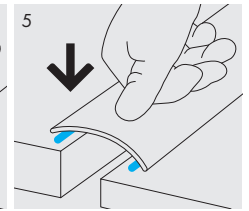
2 Remove adhesive protection paper.



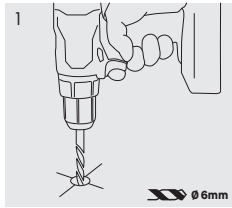
3 Turn the profile over and stick it to the floor.



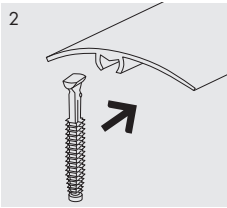
4 Glue the profile to the floor at the same level.



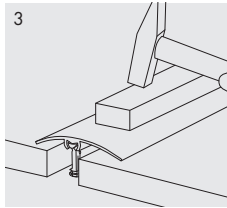
5 Glue the profile to the floor at different levels



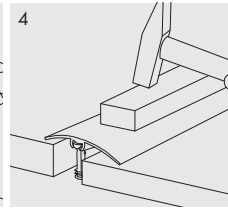
1 Drill a hole in the subfloor.



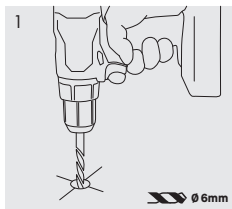
2 Insert the dowel into the guide of profile.



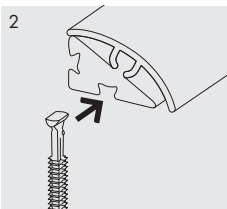
3 Drive the profile with the dowel using a wooden block.



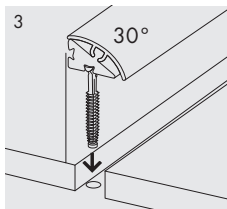
4 Drive the profile with the dowel using a wooden block.



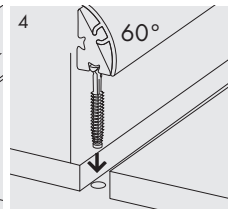
1 Drill a hole in the subfloor.



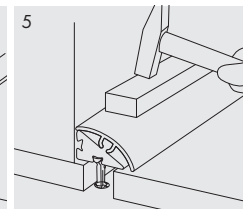
2 Insert the fixing element with dowel into the profile.



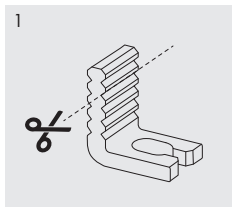
3 Fixing element allows for fitting the profile at the angle of 30°.



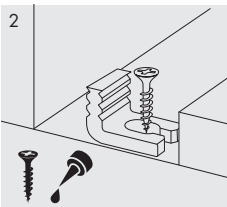
4 Fixing element allows for fitting the profile at the angle of 60°.



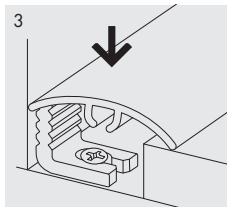
5 Drive the profile with the dowel using the wooden block.



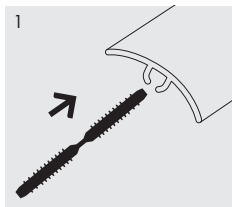
1 Cut the supporting elements to the required height.



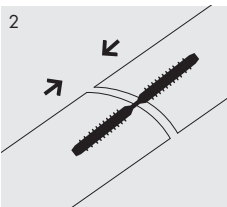
2 Screw or glue the cut element to the subfloor.



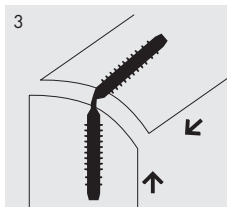
3 The fixed element supports the profile.



1 Insert the connector into the channel in the profile.



2 The connector allows to joint profiles.



3 Connection at any angle.